



**B** 3-phase  
50Hz

Sewage pump with non-clogging impeller

Special impeller and shaver mechanism (special groove) ensures that waste water and sewage are efficiently transferred.





## Non-clog Impeller

0,4kW - 3,7kW

An impeller used in centrifugal pumps. This impeller is characteristic for preventing internal clogging by solids in the pumped liquid.



## Non-clog Impeller (shrouded type)

models 5,5kW and above

An impeller having a wide channel extending from inlet to exit, which prevents internal clogging by solids sucked in via the inlet.

## Optional Accessories:

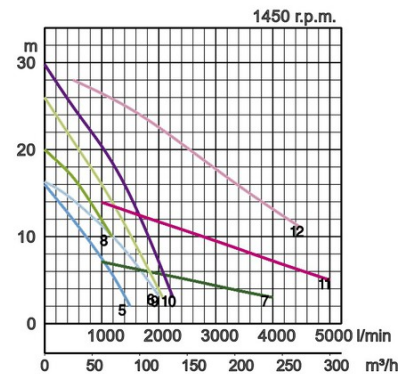
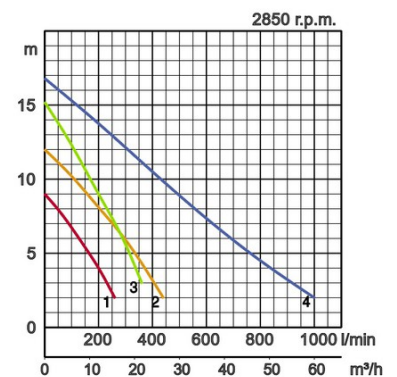
- Guide rail fitting consisting of:
  - Guide support / Guide hook
  - Duck foot bend
  - Lifting chain
- Discharge bend
- Stand for free standing type (5,5kW or over)



## Specifications:

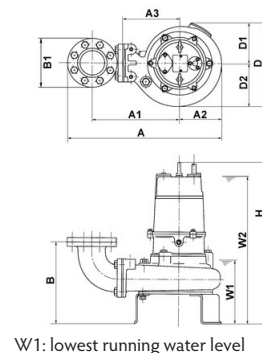
Model		Colour code curve	Bore mm	Power output kW	Phases	r.p.m.	Head max. m	Capacity max. l/min	Starting method	Dry weight kg without cable		Impeller passage mm
free standing	with guide rail fitting									free standing	with guide rail fitting	
50B2.4	TOS50B2.4	1	50	0,4	3	2850	9,0	260	direct	23,0	22,0	19
50B2.75	TOS50B2.75	2	50	0,75	3	2850	12,0	435	direct	25,0	24,0	20
50B2.75H	TOS50B2.75H	3	50	0,75	3	2850	15,2	360	direct	24,0	23,0	20
80B21.5	TOS80B21.5	4	80	1,5	3	2850	16,8	1000	direct	36,0	34,0	40
100B42.2	TOS100B42.2	5	100	2,2	3	1450	16,0	1500	direct	70,0	64,0	45
100B43.7	TOS100B43.7	6	100	3,7	3	1450	16,4	2000	direct	86,0	80,0	53
150B43.7	TOS150B43.7	7	150	3,7	3	1450	7,1	4000	direct	145,0	80,0	53
100B43.7H	TOS100B43.7H	8	100	3,7	3	1450	20,0	1180	direct	84,0	78,0	35
100B45.5	TOS100B45.5	9	100	5,5	3	1450	26,0	2080	direct	147,0	140,0	40
100B47.5	TOS100B47.5	10	100	7,5	3	1450	29,7	2260	direct	169,0	150,0	40
150B47.5L	TOS150B47.5L	11	150	7,5	3	1450	13,95	5000	direct	200,0	175,0	60
150B415	TOS150B415	12	150	15	3	1450	28,0	4500	star/delta	270,0	240,0	75

Discharge bore mm		50mm, 80mm, 100mm, 150mm	
Pumping Fluid	Type of Fluid	Municipal sewage	
	Temperature	0-40°C	
Pump	Components	Impeller	Non-clog impeller
		Shaft Seal	Double mechanical seal
		Bearings	Shielded ball bearings
	Material	Impeller	Grey iron casting EN-GJL-200
		Casing	Grey iron casting EN-GJL-200
		Suction Plate	Ductile iron casting EN-GJS-450-10, Grey iron casting EN-GJL-200
Shaft Seal	Silicon carbide in oil bath		
Motor	Motor Protector (built-in)		Circle thermal cut-out
	Phase / Voltage		3-phase / 400V / 50Hz / d.o.l., 3-phase / 400V / 50Hz / s.d.
	Insulation		Insulation class E, Insulation class F
	Lubrication		Turbine oil (ISO VG32)
	Type, Poles		Induction motor, 2 poles, IP68, 4 poles
	Material	Casing	Grey iron casting EN-GJL-150, Grey iron casting EN-GJL-200
Shaft		Stainless steel EN-X6Cr13, Stainless steel EN-X30Cr13	
Cable		Rubber, NSSHÖU	
Discharge Connection		Inside thread, JIS10K flange	
Optional Accessories		Guide rail fitting "TOS" (guide support, duck foot bend, lifting chain) / Bend and stand set for free standing types	



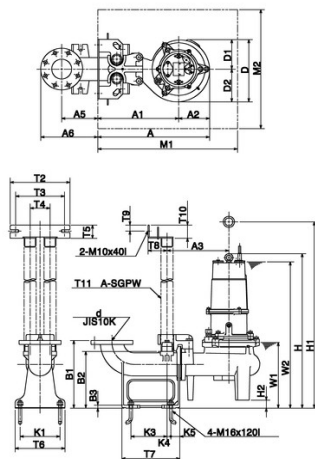
## Dimensions in mm:

Model	A	A1	A2	A3	B	B1	D	D1	D2	H	W1	W2
50B2.4	347	208	85	120	181	155	224	112	112	443	140	340
50B2.75	405	226	125	138	199	155	250	125	125	439	170	410
50B2.75H	405	226	125	138	199	155	250	125	125	415	145	385
80B21.5	446	267	125	165	234	185	250	125	125	536	190	465
100B42.2	569	322	154	210	303	210	331	164	167	616	225	570
100B43.7	575	322	160	210	308	210	339	164	175	690	235	645
150B43.7	871	503	228	320	515	280	486	232	254	875	450	830
100B43.7H	569	322	154	210	303	210	331	164	167	666	225	620
100B45.5	687	388	194	260	372	210	400	197	203	824	335	700
100B47.5	687	388	194	260	372	210	400	197	203	814	335	720
150B47.5L	871	503	228	320	515	280	486	232	254	1085	450	955
150B415	895	513	242	330	506	280	490	245	245	1168	405	1045



Dimensions - guide rail fitting type in mm:

Model	A	A1	A2	A3	A5	A6	D	D1	D2	H	H1	H2	M1	M2	W1	W2
50B2.4	310	225	85	175	175	253	224	112	112	478	696	58	550	350	200	400
50B2.75	368	243	125	193	175	253	250	125	125	479	665	40	550	350	210	450
50B2.75H	368	243	125	193	175	253	250	125	125	459	665	44	550	350	190	430
80B21.5	410	285	125	225	165	258	250	125	125	515	585	50	500	400	240	515
100B42.2	484	330	154	270	165	270	331	164	167	631	790	15	600	500	240	585
100B43.7	490	330	160	270	165	258	339	164	175	700	860	10	600	450	245	655
150B43.7	735	507	228	412	190	330	459	205	254	820	1010	-	900	700	395	775
100B43.7H	484	330	154	270	165	270	331	164	167	681	840	15	600	500	240	635
100B45.5	619	425	194	330	181	286	384	181	203	906	1202	118	700	600	305	775
100B47.5	619	425	194	330	181	286	384	181	203	927	1240	118	700	600	305	800
150B47.5L	735	507	228	412	190	330	459	205	254	1030	1378	144	900	700	400	900
150B415	759	517	242	422	190	330	464	220	244	1122	1488	147	900	700	360	995



W1: lowest running water level

Discharge bore mm d	T2	T3	T4	T5	T6	T7	T8	T9	T10	T11	K1	K3	K4	K5	B1	B2	B3	
50mm	50	230	185	70	50	160	200	50	49	53	25	120	110	10	40	250	203	15
80mm	80	230	195	80	63	220	250	60	25	55	32	170	155	15	40	290	236	15
100mm	100	230	195	80	50	220	250	60	49	52	32	170	155	15	40	290	237	15
150mm	150	424	350	136	79	360	400	95	30	71	50	300	205	95	50	480	368	15

# Tsurumi (Europe) GmbH

Wahlerstr. 10  
 D-40472 Düsseldorf  
 Tel.: +49 (0)211-4179373  
 Fax: +49 (0)211-417937-480  
 Email: sales@tsurumi.eu  
 www.tsurumi.eu

We reserve the right to change specifications and designs herein for improvement without prior notice. Our pumps are for professional use only. In the event that Tsurumi (Europe) GmbH have, in exceptional cases taken over, a manufacturer's warranty, this entitles the enduser to assert remedy free of charge against Tsurumi (Europe) GmbH due to any defect to the product occurring during the guarantee period (see below), also then when the warranty claims against the seller do not or no longer exist. In the event of malfunction, which is attributable to the improper handling by the enduser, no guarantee claim shall arise. Further claims shall not result from the warranty, unless if something to the contrary has explicitly been determined. The decision as to whether remedy is effected by way of replacement or repair shall be at the choice of Tsurumi (Europe) GmbH. The claims shall be time barred after a period of three months after expiry of the guarantee period, however, not before expiry of the warranty period which is valid towards the seller. In the event of doubt, the warranty period shall correspond with the warranty period which is valid between the end-user and his seller.

sew-EPN

