

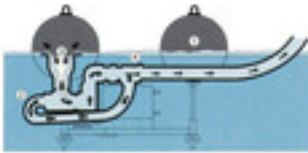


FSP 3-phase
50Hz

Scum skimmer

A bypass attached to the discharge opening recycles part of pumped water to the intake to generate a jet flow. An ejector effect produced by the jet flow, generates suction power in the collection cup (Intake). This guarantees a stable sucking process even if water, air, and suspended matter are drawn in from water surface simultaneously.





Virtues

A set of three floats connected by a frame carries the pump. Simple adjustment of the float rods ensures a stable position of the pump inlet cone in relation to the surface of the liquid, in spite of the liquid levels changing (1). A powerful jet injector helps the pump suck up water, air, or scum at a constant rate (2). These pumps efficiently collect more scum and less supernatant liquid than conventional equivalents (3). Use of a flexible hose simplifies installation (4).

Application

- Collection and return of floating scum at sewage treatment plants
- Collection of suspended solids on water surface
- Collection of supernatant liquid near water surface

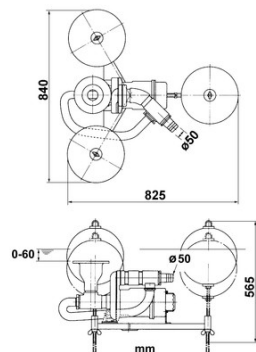
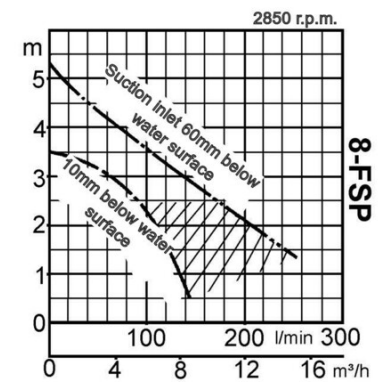
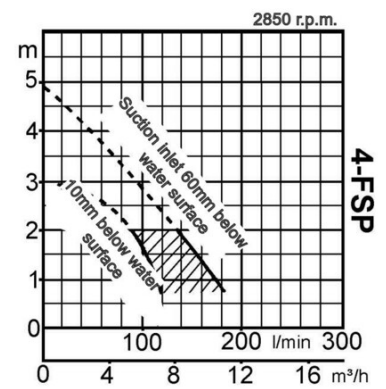


Specifications:

Model	Bore mm	Power output kW	Phases	r.p.m.	Head max. m	Capacity max. l/min	Starting method	Dry weight kg without cable	Impeller passage mm
4-FSP	50	0,4	3	2850	4,9	180	direct	36,0	16
8-FSP	50	0,75	3	2850	5,3	255	direct	38,0	22



ø Discharge bore mm		50mm		
Pumping Fluid	Type of Fluid	Treated sewage		
	Temperature	0-40°C		
Pump	Components	Impeller	Non-clog impeller	
		Shaft Seal	Double mechanical seal	
		Bearings	Shielded ball bearings	
	Material	Impeller	Grey iron casting EN-GJL-200	
		Upper casing	Grey iron casting EN-GJL-200	
		Lower casing	Grey iron casting EN-GJL-200	
		Shaft Seal	Silicon carbide in oil bath	
		Float	Plastic	
Motor	Phase / Voltage		3-phase / 400V / 50Hz / d.o.l.	
	Insulation		Insulation class E	
	Lubrication		Turbine oil (ISO VG32)	
	Motor Protector (built-in)		Circle thermal cut-out	
	Type, Poles		Induction motor, 2 poles, IP68	
	Material	Casing	Grey iron casting EN-GJL-150	
		Shaft	Stainless steel EN-X6Cr13	
Cable		Rubber, NSSHÖU		
Discharge Connection		Hose coupling		





Contributing to World-wide Prosperity and Understanding through Worker- and Environment-friendly Production.

Designed for increased productivity through fully integrated streamlined production systems, Tsurumi's factory in Kyoto (Japan) features a production capacity of a full 1 million pumps per year. Large-scale modern R&D facilities offer optimum conditions for experimenting and testing of even super-large pumps and for developing new products to expand the possibilities and applications of pumps. To provide optimum conditions for our main asset, our workers, as well as for the environment, special emphasis is placed on optimized working conditions with airconditioning, minimized dust and exhaust gas emission, comprehensive recycling and waste recovery.

Tsurumi (Europe) GmbH

Wahlerstr. 10
D-40472 Düsseldorf
Tel.: +49 (0)211-4179373
Fax: +49 (0)211-417937-480
Email: sales@tsurumi.eu
www.tsurumi.eu

We reserve the right to change specifications and designs herein for improvement without prior notice. Our pumps are for professional use only. In the event that Tsurumi (Europe) GmbH have, in exceptional cases taken over, a manufacturer's warranty, this entitles the enduser to assert remedy free of charge against Tsurumi (Europe) GmbH due to any defect to the product occurring during the guarantee period (see below), also then when the warranty claims against the seller do not or no longer exist. In the event of malfunction, which is attributable to the improper handling by the enduser, no guarantee claim shall arise. Further claims shall not result from the warranty, unless if something to the contrary has explicitly been determined. The decision as to whether remedy is effected by way of replacement or repair shall be at the choice of Tsurumi (Europe) GmbH. The claims shall be time barred after a period of three months after expiry of the guarantee period, however, not before expiry of the warranty period which is valid towards the seller. In the event of doubt, the warranty period shall correspond with the warranty period which is valid between the end-user and his seller.



sew-FSP-EN

